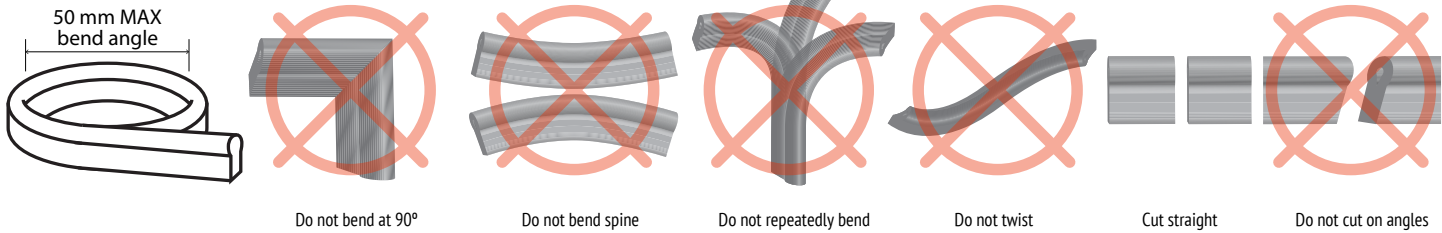




Things to consider

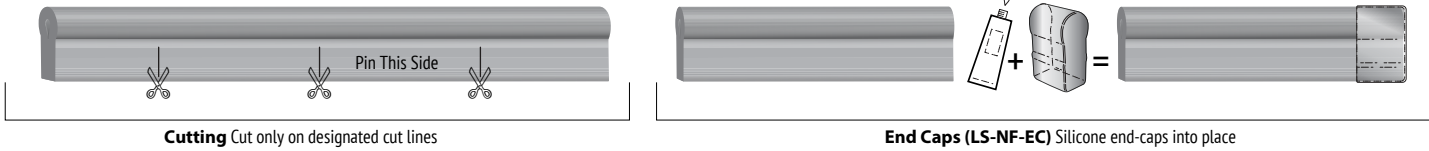


Tools Needed: Non Corrosive waterproof silicone, Tin Snips to cut, Screwdriver, Measuring Tape

Bending Rules:

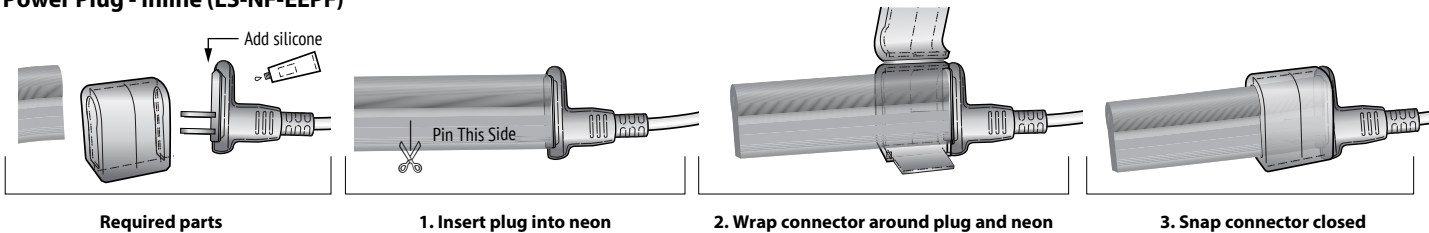
When bending 24V DC LED Neon, make sure to follow the bending rules. This includes: do not bend tighter than a 50mm angle, do not bend 90°, do not bend the spine, and do not twist.

Cutting Instructions



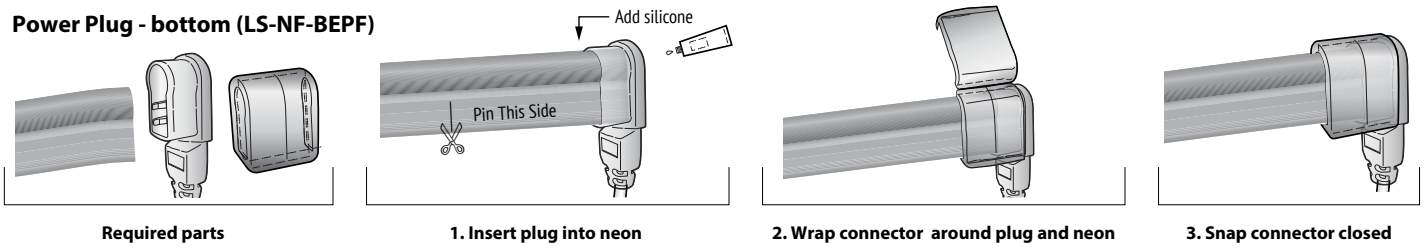
When cutting Lumenstar's 24V DC LED Neon, make sure to cut straight lines only on the designated cut lines (every 2" or 50mm). After cutting, make sure to attach the End Cap to protect the internal circuitry with non-corrosive waterproof silicone. Test before installing.

Power Plug - inline (LS-NF-EEPF)



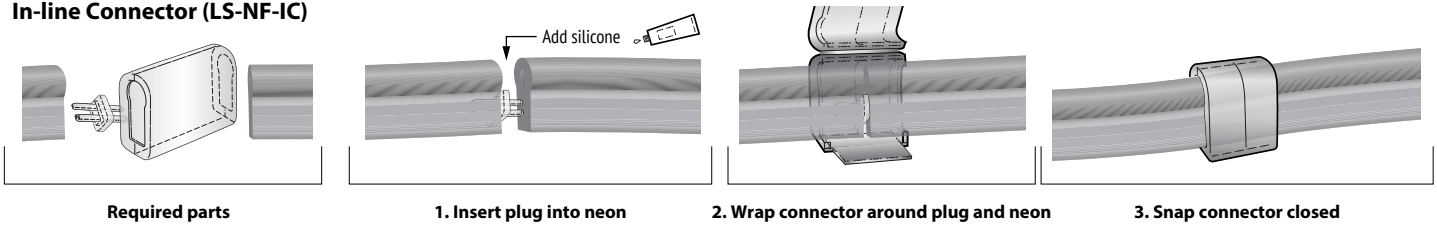
If adding a new power feed to a cut piece of 24V DC LED Neon, push pins of new power into the Neon where the opening is lined up. Wrap plug and connector clamp over Neon and new connector and snap connector over. Test. For all outdoor installs, silicone must be used to protect from rain and moisture.

Power Plug - bottom (LS-NF-BEPF)



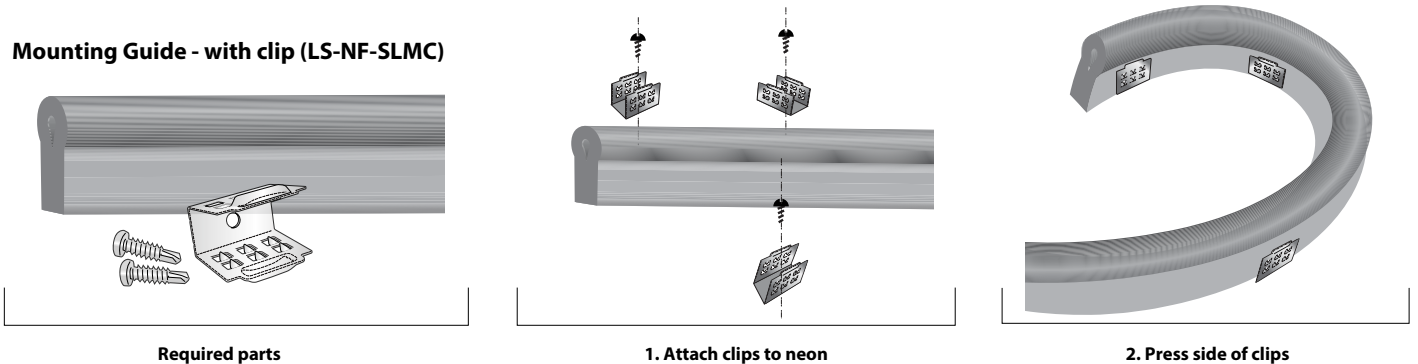
If adding a new power feed to a cut piece of 24V DC LED Neon, push pins of new power into the Neon where the opening is lined up. Wrap plug and connector clamp over Neon and new connector and snap connector over. Test. For all outdoor installs, silicone must be used to protect from rain and moisture.

In-line Connector (LS-NF-IC)



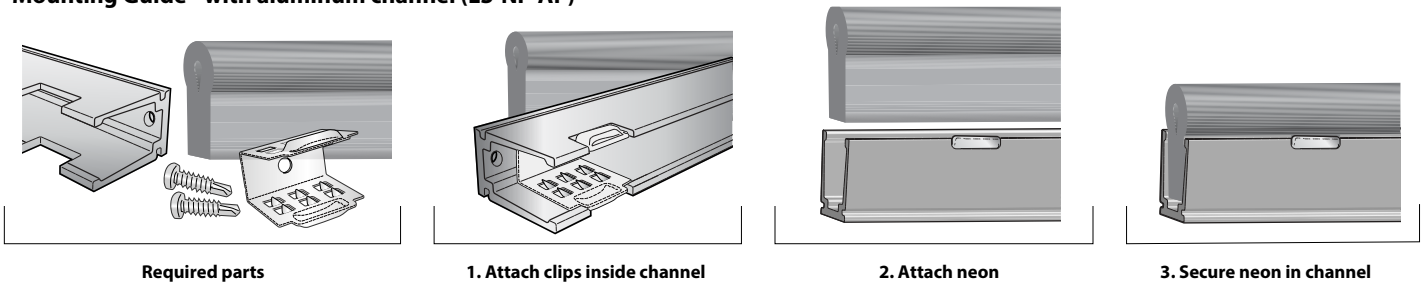
Use the inline connector to attach two pieces of 24V DC LED Neon. Max length 50FT (one side power). Max length 100FT (two-sided power). Take double sided connector and slide into both sides of Neon. Test to confirm properly done. Add silicone to protect the circuitry. Clamp over inline connector clamp by lining up grooves. Test again, handle with care. For all outdoor installs, silicone must be used to protect from rain and moisture.

Mounting Guide - with clip (LS-NF-SLMC)



Use slim mounting clips for curves. Attach stainless steel clips to surface, snap 24V DC LED Neon into premounted clips. The teeth from the clips will grab onto the Neon. Press sides of clips for extra hold.

Mounting Guide - with aluminum channel (LS-NF-AP)



Mount aluminum channel to surface where needed. Attach 24V DC LED Neon into the channel. Note that inline connectors may not fit into the channel, so review and plan first. Use LS-NF-MC mounting clips where needed.