

SLIM MODERN ALUMINUM CHANNEL

The low-profile LL12 aluminum channel can be recessed or surface mounted for applications.

Features

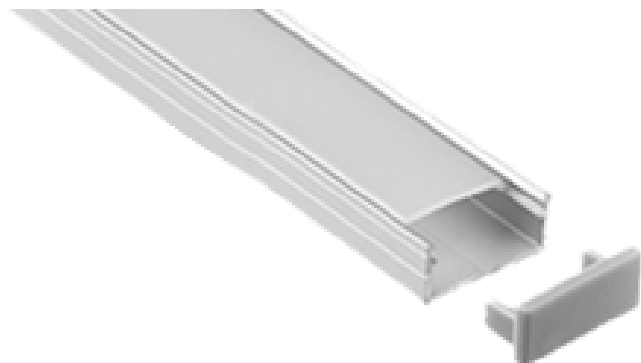
- Made from anodized aluminum
- Frosted lens evenly diffuses light output
- Includes channel, lens, end caps and mounting hardware
- Suitable for 8-10mm wide LED strip lights

Installation

Recessed or surface mount

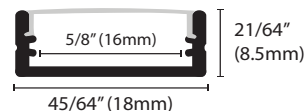
Applications

Shelving | Back Bar | Workspace



Channel Length	1M (40") / 2M (80")
Lens	Frosted
Lens Length	1M (40") / 2M (80")
Housing	Anodized aluminum
Router Dimensions	3/4" (19mm)
Compatible Strips	All Indoor and Outdoor Except RGBW and RGBW Moisture Proof
Compatible Connectors	3528, 2835, RGB



Dimensions



Ordering Codes

	Product	Length
Aluminum Channel	LS- LL12	-
		L1 : 1M (40")
		L2 : 2M (80")

Accessories

Image	Product	Description
	End Caps	Included. End caps, one with hole, one without (sold as sets).
	Mounting Clips	Included. Mounting hardware for Aluminum channel, sold in sets of (2).