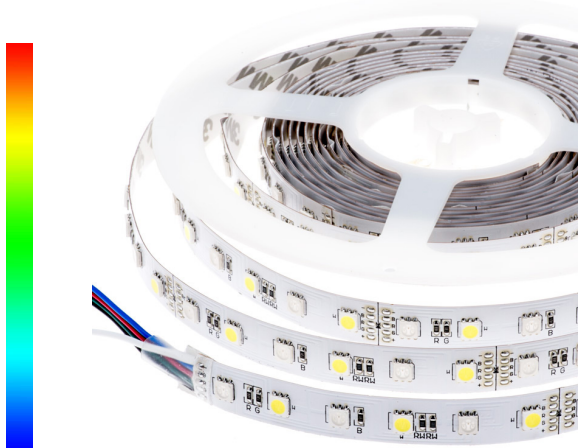


## RGBWW LED Flexible Tape



- Cuttable ✂ every 6 LEDs - 4" (102mm)
- RGB & Warm white 2700K Chips
- 5 Wire system



**NOTE:** Dimmable power supplies cannot be used with our RGB controllers. All of our RGB controllers are dimmable with remote

Product Code	5M(16.4'):	LS-FLI-35B-24-60- <b>RGBW</b>
	5M(16.4'):	<b>Moisture Proof:</b> LS-FLM-35B-24-60- <b>RGBW</b>
Voltage		24V DC
Wattage		14.4W/M (4.4W/FT)
# of LEDs		300 Triple chip SMDs/roll 30 RGB Chips & 30 WW or WW Chips/M
Color Temperature		<b>RGBWW</b> color changing <b>RGB</b> + Warm white 2700K Chips
Dimensions		I: W35/64 x H5/64" (W14 x 2mm) MP: W35/64 x H5/32" (W14 x H4mm)
High CRI		>90
Lumens		410/M (125/FT) Using only <b>RGB</b> 944/M (288/FT) WW only 1354/M (413/FT for <b>RGB</b> & WW
Dimmable		Yes (Using <b>RGB</b> Controller)

**Roll Length: 5M (16.5')** Indoor & Moisture proof  
*25M (82') lengths: Special order only*

**Cut distance:** 24V ::: 6 LEDs - 4" (200mm)

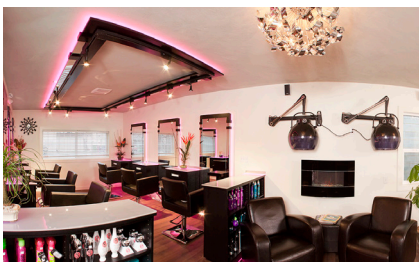
## Applications

- Cove lighting
- Mood lighting
- Display lighting
- Back bar lighting

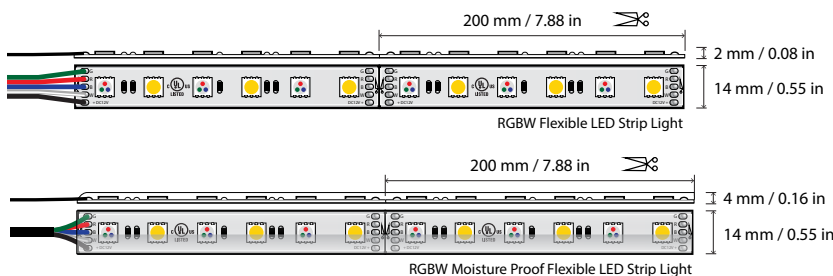
## Features

- Ultra thin profile
- Double sided 3M tape
- **Xbrite** Triple chip SMD LED technology
- Modern contemporary design
- Simple to install
- +50,000 hour lifespan

**3 Year Warranty**



**Note:** If using solderless connectors on outdoor flexible strip, the connection points must be properly sealed to prevent moisture entry. Heat shrink tube and/or silicone is recommended. If not sealed correctly premature failure is possible.



Solderless Connectors	Code
Seamless connector - Application: Add length	LS- <b>RGBW</b> -SC1
Connector on one end - Application: Cut strip to power	LS- <b>RGBW</b> -SC2
Connector on both ends - Application: Corners	LS- <b>RGBW</b> -SC3
L-Connector - Application: Corners	LS- <b>RGBW</b> -SC4

### RGBW Controllers Sold separately:

- To function optimally **RGBW** LEDs require an LED 12V/24V DC Driver + an **RGBW** Receiver & Controller

[lumenstarled.com](http://lumenstarled.com)