
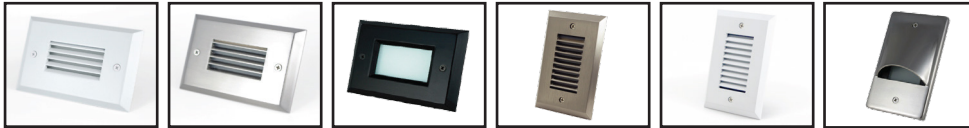


JOB# _____

LED STEP LIGHT

CHOOSE A TRIM COLOR AND STYLE

CHOOSE LIGHT COLOR

	CODE: RT05-HV STEP LIGHT	<input type="radio"/> BLACK <input type="radio"/> WHITE <input type="radio"/> BRUSHED NICKEL	+	<input type="radio"/> WINDOW <input type="radio"/> SCOOP	<input type="radio"/> HORIZONTAL LOUVER <input type="radio"/> VERTICAL LOUVER	<input type="radio"/> 3000K Warm White <input type="radio"/> 4000K White						
					VOLTAGE: 120V WATTAGE: 2W SPREAD: 120° LUMENS: 145	<table border="1"> <tr><th colspan="2">CALCULATIONS</th></tr> <tr><td>WATTS: 2</td><td>X QTY:</td></tr> <tr><td colspan="2">= TOTAL WATTAGE:</td></tr> </table>	CALCULATIONS		WATTS: 2	X QTY:	= TOTAL WATTAGE:	
CALCULATIONS												
WATTS: 2	X QTY:											
= TOTAL WATTAGE:												

Installation: Fits Standard Single Gang Junction Box

CHOOSE A TRIM COLOR AND STYLE

CHOOSE LIGHT COLOR

	CODE: RD05-HV STEP LIGHT	<input type="radio"/> BLACK <input type="radio"/> WHITE <input type="radio"/> BRUSHED NICKEL	+	<input type="radio"/> WINDOW <input type="radio"/> HORIZONTAL LOUVER	<input type="radio"/> 3000K Warm White <input type="radio"/> 4000K White							
					VOLTAGE: 120V WATTAGE: 3W SPREAD: 120° LUMENS: 260	<table border="1"> <tr><th colspan="2">CALCULATIONS</th></tr> <tr><td>WATTS: 3</td><td>X QTY:</td></tr> <tr><td colspan="2">= TOTAL WATTAGE:</td></tr> </table>	CALCULATIONS		WATTS: 3	X QTY:	= TOTAL WATTAGE:	
CALCULATIONS												
WATTS: 3	X QTY:											
= TOTAL WATTAGE:												

Installation: Fits Standard Octagon Junction Box

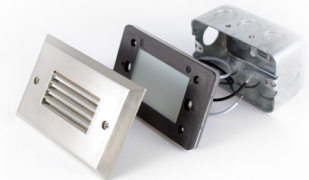
CHOOSE A TRIM COLOR AND STYLE

CHOOSE LIGHT COLOR

	CODE: RT10-HV STEP LIGHT	<input type="radio"/> BLACK <input type="radio"/> WHITE <input type="radio"/> BRUSHED NICKEL	+	<input type="radio"/> WINDOW <input type="radio"/> HORIZONTAL LOUVER	<input checked="" type="radio"/> 4000K White							
					VOLTAGE: 120V WATTAGE: 3.2W SPREAD: 120° LUMENS: 300	<table border="1"> <tr><th colspan="2">CALCULATIONS</th></tr> <tr><td>WATTS: 3.2</td><td>X QTY:</td></tr> <tr><td colspan="2">= TOTAL WATTAGE:</td></tr> </table>	CALCULATIONS		WATTS: 3.2	X QTY:	= TOTAL WATTAGE:	
CALCULATIONS												
WATTS: 3.2	X QTY:											
= TOTAL WATTAGE:												

Installation: Fits Standard Triple Gang Junction Box

- Simple to install
- +50,000 hour lifespan
- 3 Year Warranty
- ETL Listed for Indoor & Outdoor Wet Applications
- Fits standard North American Junction boxes
- Non-dimmable



To order please call: Local: **604.484.9394** Toll Free: **1.866.852.7857**
or Email completed order forms to sales@lumenstarled.com for quote



© 2017 All rights reserved
Lumenstar LED Lighting Inc.